

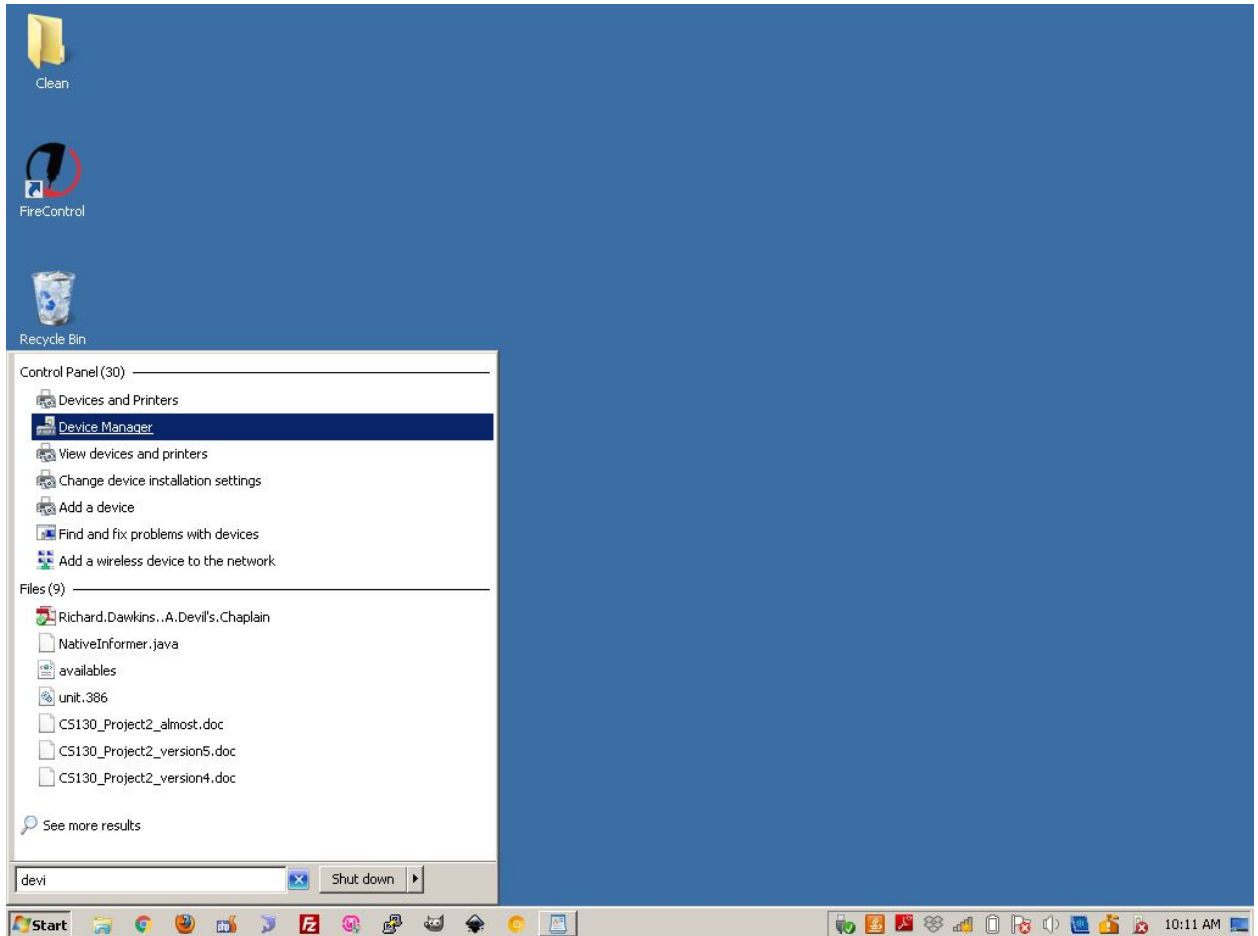
Windows 7/8 Manual Driver Install for Langmuir Systems MCB

1.) Go to the Langmuir Systems downloads page (<http://www.langmuirsystems.com/downloads>) and click the link 'FireControl CrossFire Gen2 - Windows 7 ONLY'. This should download the MCB driver file. Please note the location on your computer where this file is stored (such as the downloads folder). **Update 3/10/20:** *This driver will also work for Windows 8 Installation as well and the instructions are the same.*

- Drivers

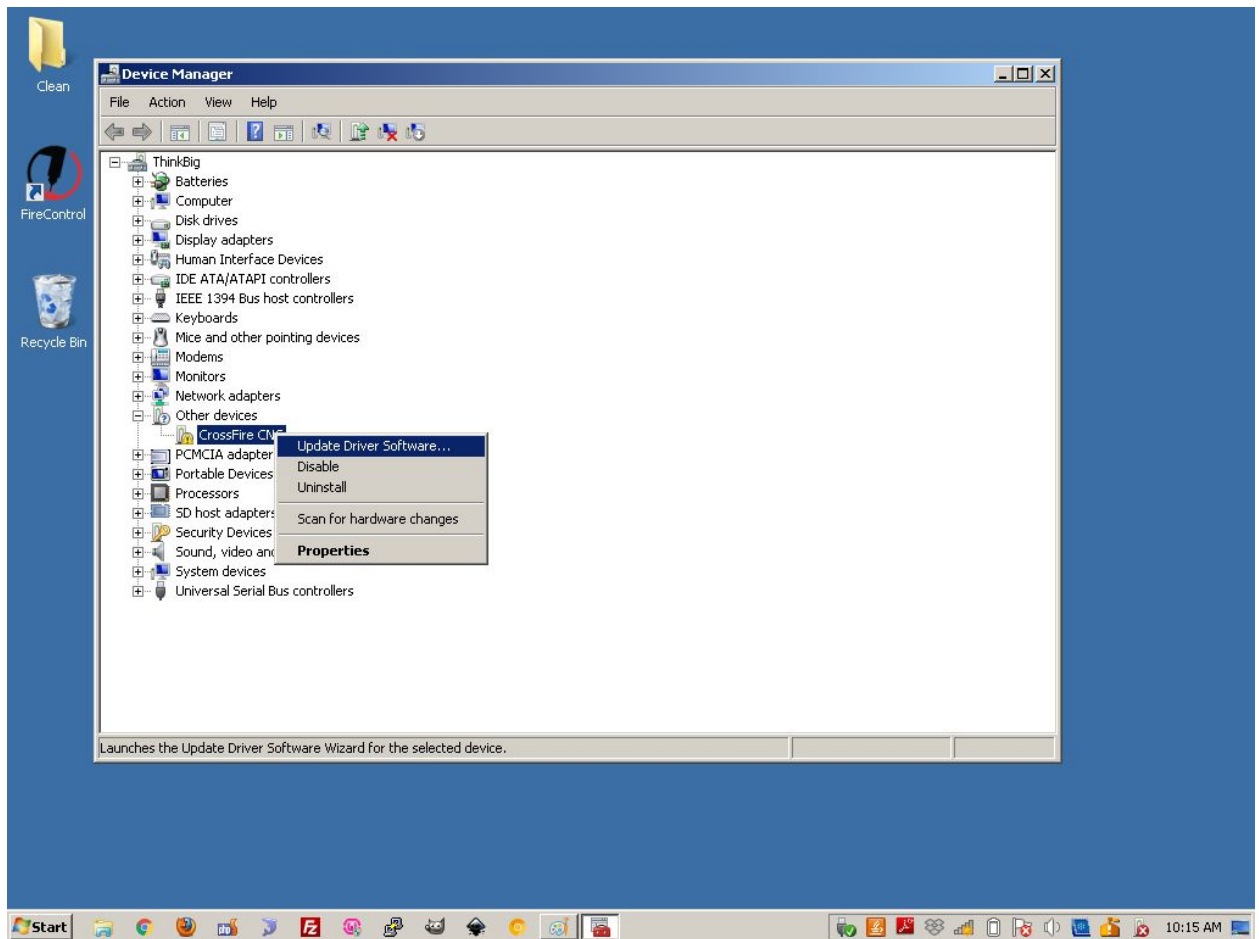
- FireControl USB THC Driver - Windows (v3.4)
 - If manual driver installation required.
- FireControl USB THC Driver - MacOS (v1.5)
 - If manual driver installation required.
- FireControl CrossFire Gen2 - Windows 7 ONLY
 - If manual driver installation required.

2.) Click the 'Start' button in the task bar and type in 'device' until you see the **Device Manager** option pop up. Click this text.

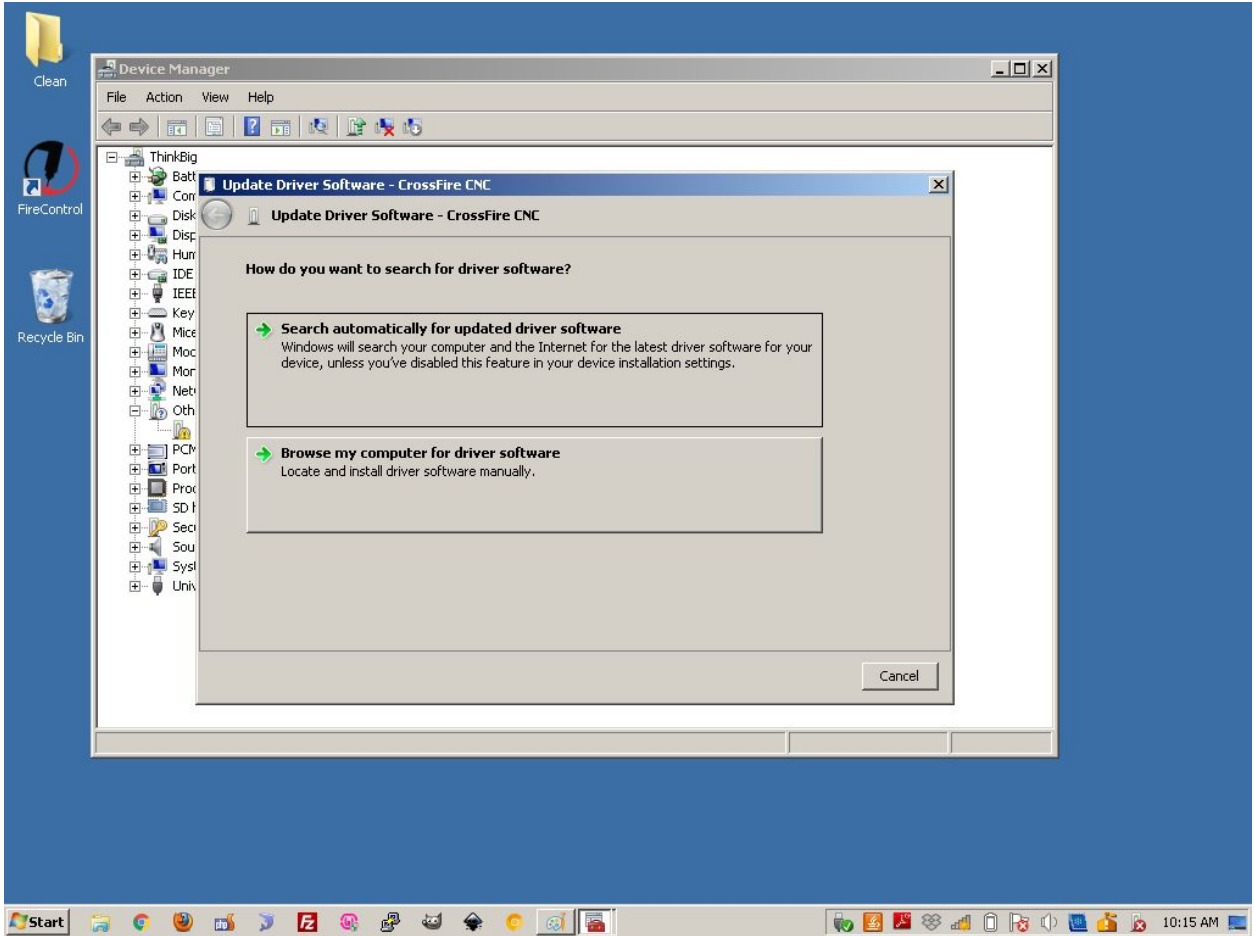


- 3.) Next, with your USB cable connected to the electronics box, you should see the CrossFire CNC device when you click the '+' symbol next to **Other Devices**. Right click

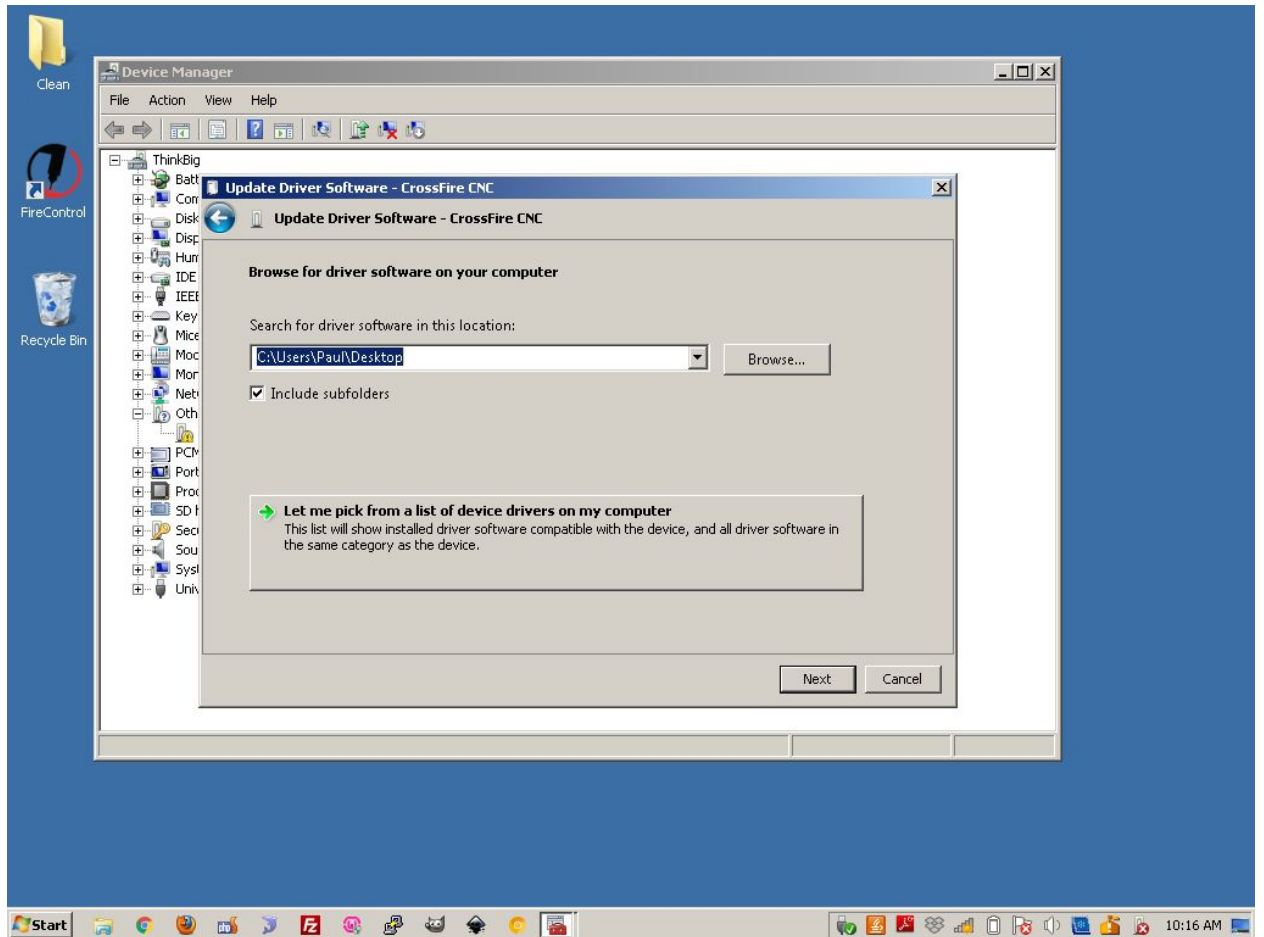
CrossFire CNC and then click 'Update Driver Software...'



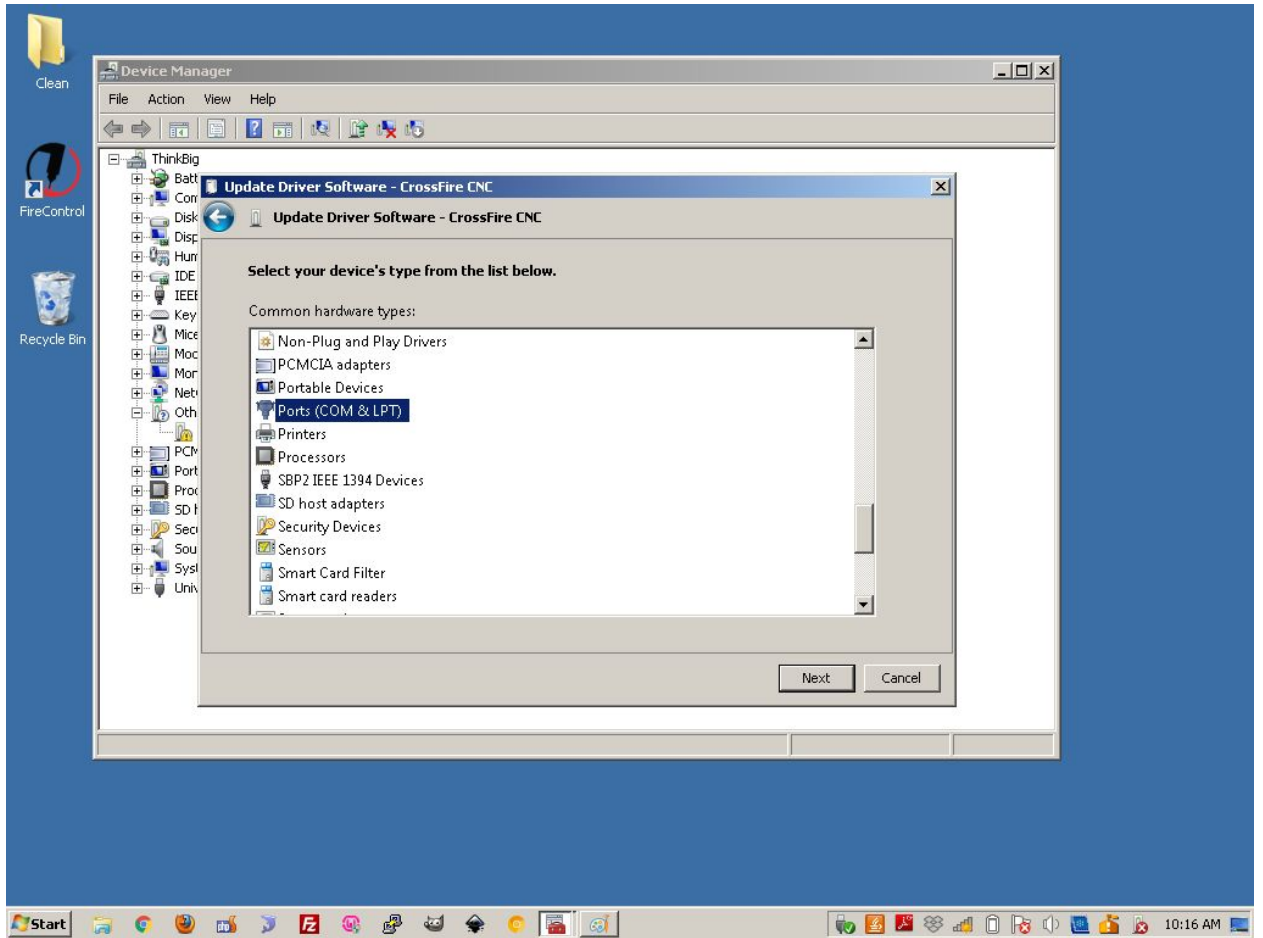
4.) Next click the bottom option 'Browse my computer for driver software' as shown below.



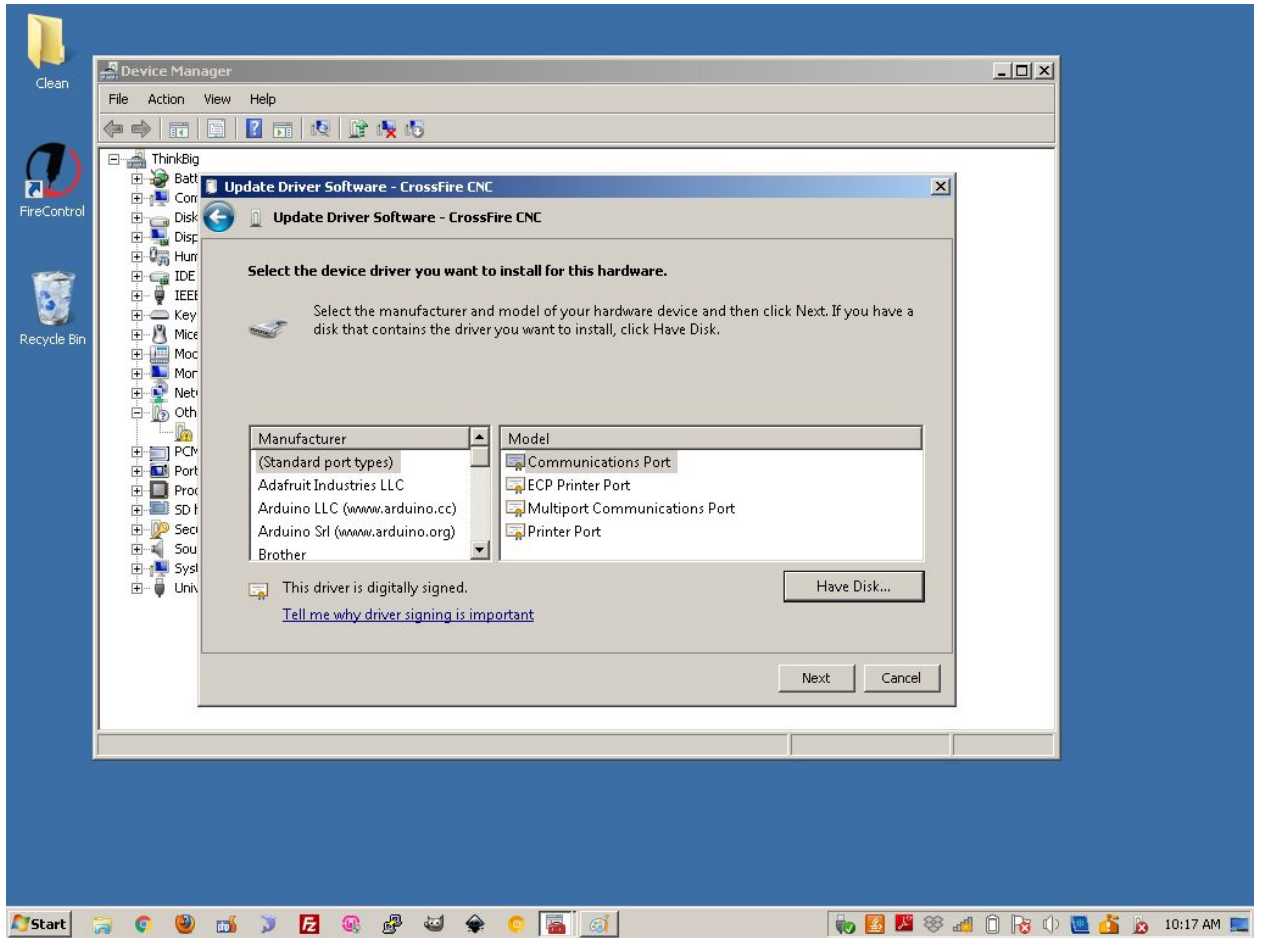
- 5.) Next, click the option 'Let me pick from a list of device drivers on my computer' as shown below.



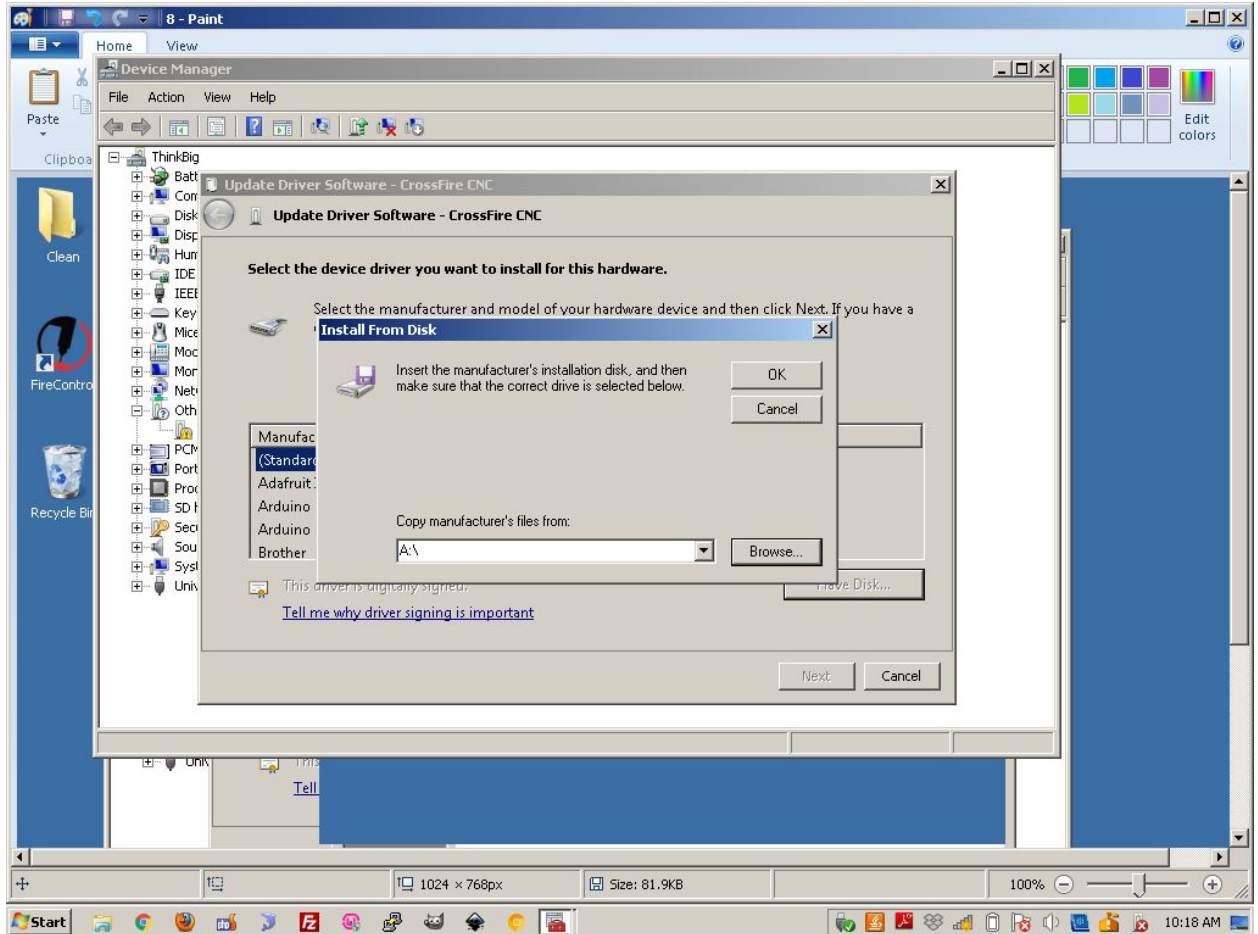
- 6.) Next, scroll down and click 'Ports (COM & LPT)' in the list and then click next as shown below.



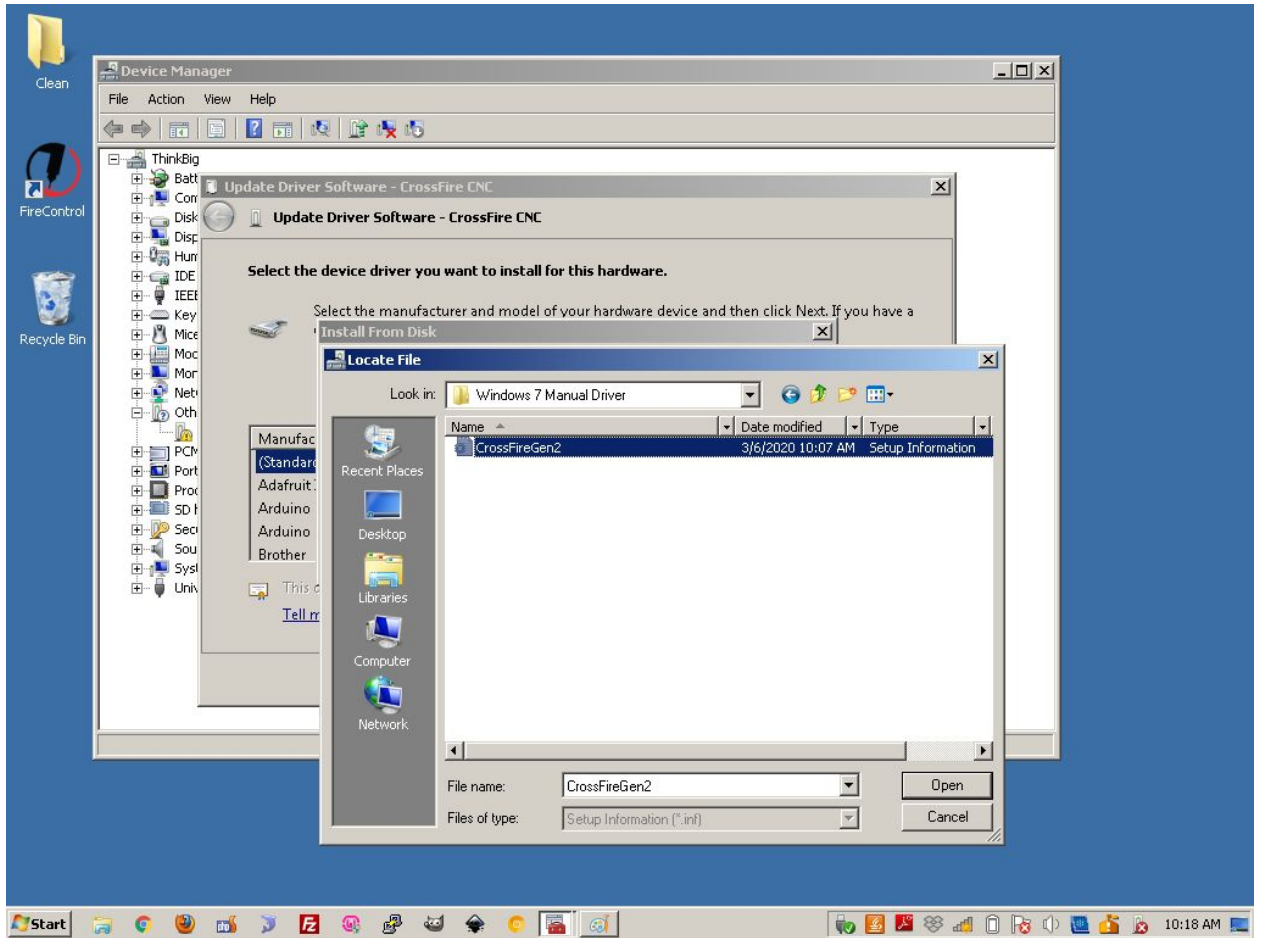
7.) Next, click the button 'Have Disk..'



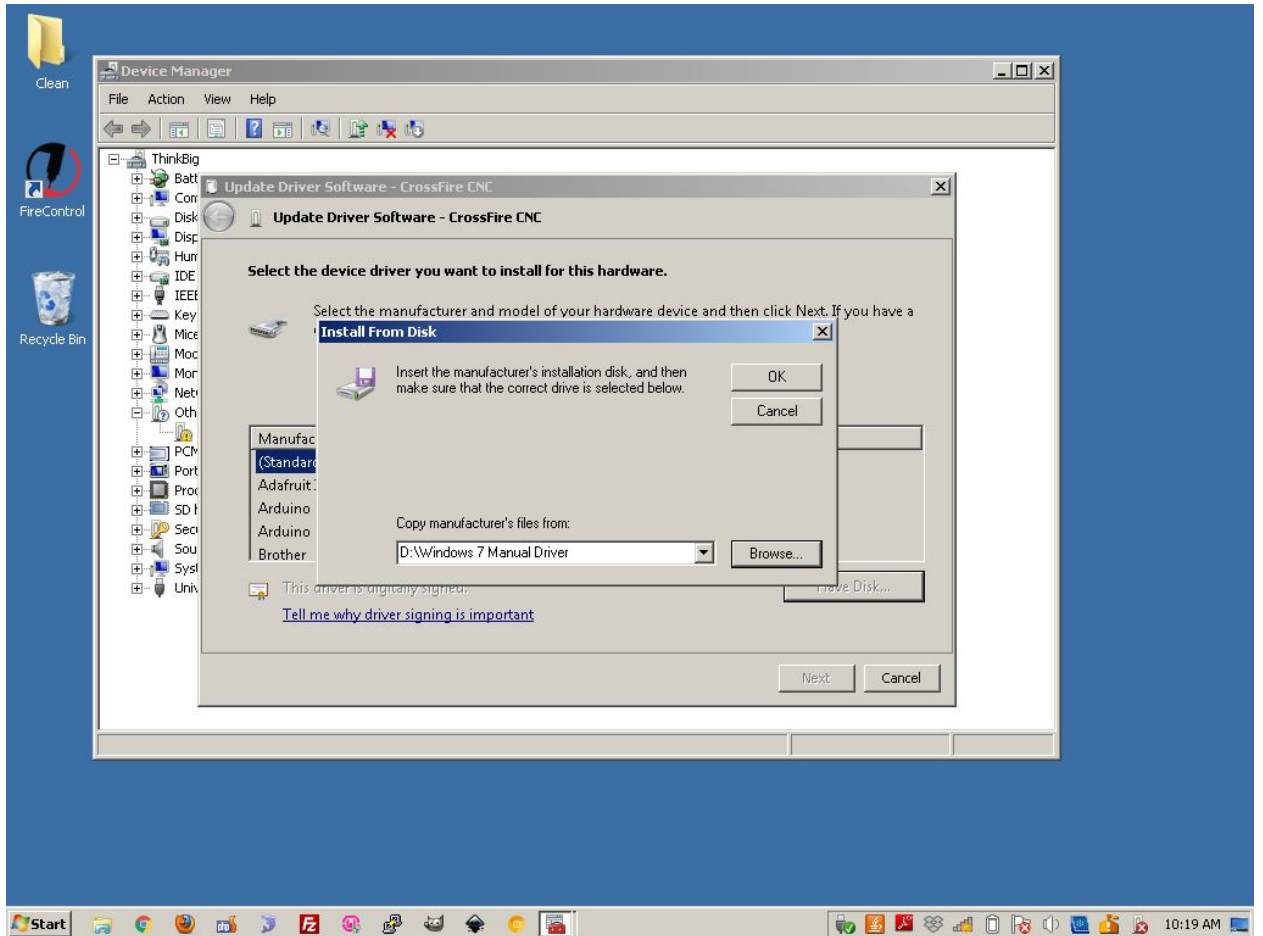
8.) Next, click the 'Browse' button as shown below.



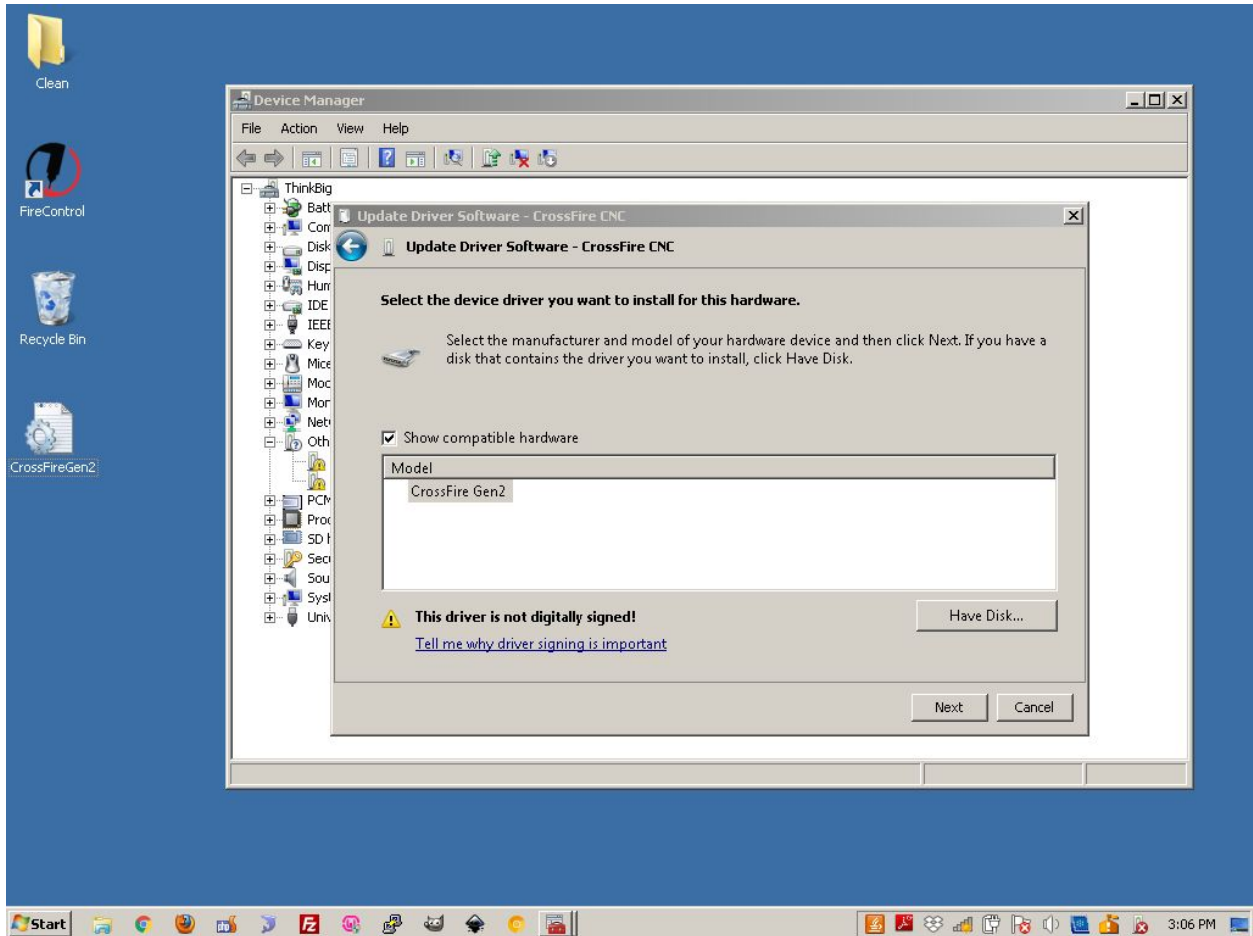
- 9.) Next, using the file explorer menu navigate to the location where you downloaded the CrossFireGen2.inf file from our website and select this file and click 'Open'.



10.)Next click 'Ok' as shown below.



11.) Next, scroll down and select 'CrossFire Gen2' from the list and click next.



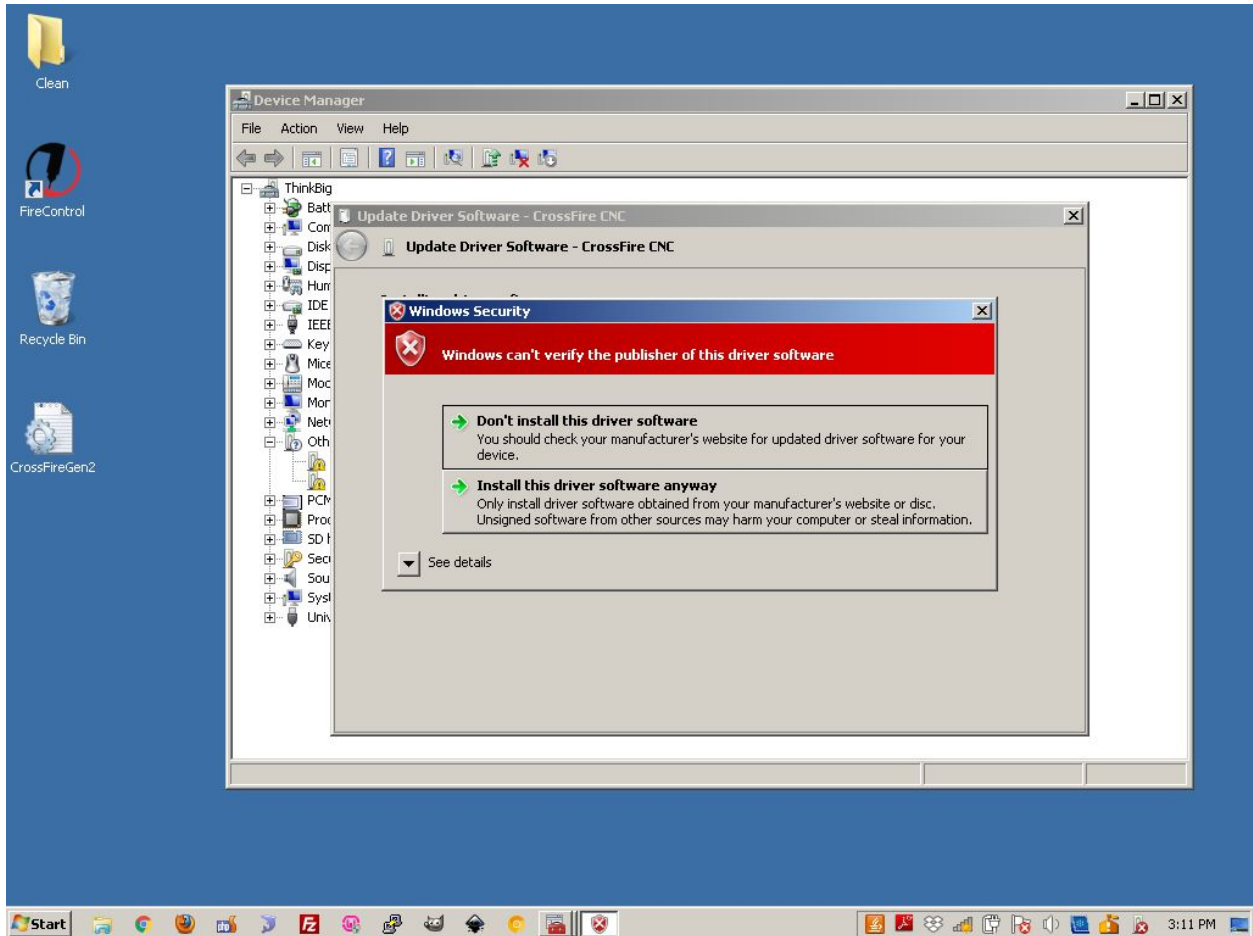
12.) A prompt will come up on the screen. Click 'Yes' or 'Install this driver software anyway'. **Note: If you encounter an error because the driver is not digitally signed, you will need to disable digital driver signing for your computer. To do that, follow the instructions in the following guides:**

Windows 7:

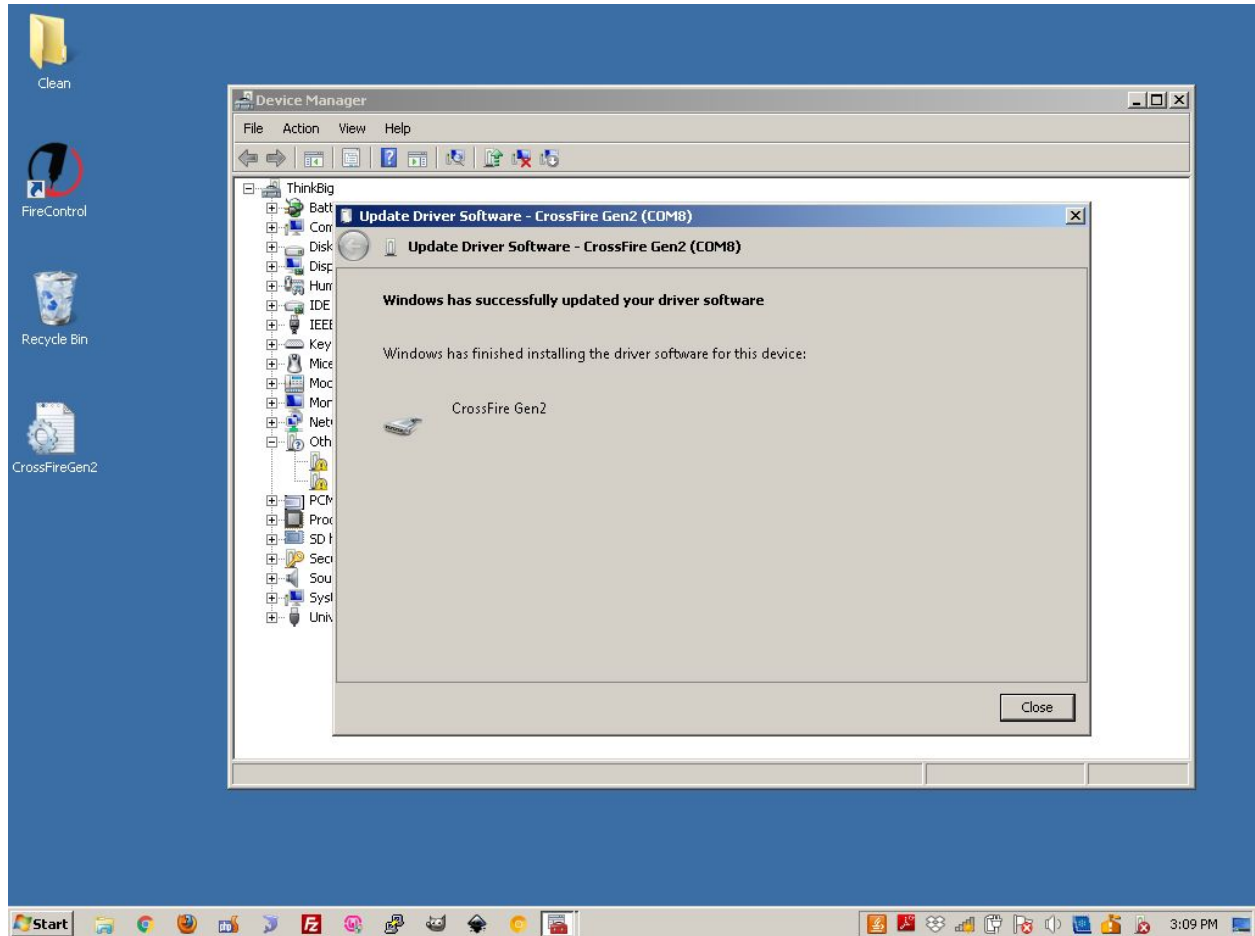
<http://www.icas.no/no/filer/DisableDigitalDriverSigninginWindows7Vista.pdf>

Windows 8:

<https://www.howtogeek.com/167723/how-to-disable-driver-signature-verification-on-64-bit-windows-8.1-so-that-you-can-install-unsigned-drivers/>



13.) If done successfully, a prompt will appear on screen letting you know that the driver was installed correctly.



14.) You can now open FireControl and your device should Auto-connect appropriately. If it does not, click the drop down menu in machine connections and select the CrossFire machine. You may need to unplug and plug your USB cable back in for this to work after installing the drivers.